



Smart Greenhouse and Urban Gardens







 myfood®



# The necessary transformation to meet the challenges of our century

## *A collective awareness is in motion*

More and more people around the world continue to learn about the negative consequences of industrial agriculture on the environment and our own health.

The agro-food industry hurts our planet by consuming non-renewable resources, as well as intensive use of pesticides and fertilizers, which has contributed to a decline of pollinating insects, loss of biodiversity and global warming. The content of our plates has become a social issue.

The fruits and vegetables sold in our supermarkets have suffered from modifications that only benefit the bottom-line of these large companies and have lost their taste and nutritional value.



## *So, what if we cultivated differently?*

The content of our plates has become a social subject. Our ambition: make possible a home-production of a healthy, diverse and ultra-fresh diet all-year-round.

Reconnect with nature and enjoy a sense of well-being.





## *Take inspiration from nature and anchor yourself in the real world*

### *Cultivating your garden is essential to rediscover the richness of life*

In the city or in the countryside, it is possible to create resilient and productive ecosystems.

We combine our ancestor's techniques inspired by permaculture with aquaponics, where we create an innovative symbiosis that connects the plant with the aquatic world.

We ensure quality harvests by following the rhythm of the seasons and cleverly associating certain plant species.

### *An experience that adapts to the constraints of the modern world*

Lack of time, lack of space, lack of skills.

There are many barriers that limit a radical change in habits.

We have designed our solutions to enable as many people as possible to engage in this progression, step by step for a diversified production all year round.

From project design to successful management.





## Smart Greenhouse and Urban Gardens

4 | 5

### *Produce with a free mind*

Harvest up to 400 kilograms of fruit and vegetables annually with only several hours of weekly maintenance. Receive remote notifications to resolve problems in advance.

### *Produce fresh and healthy food in large quantities*

Ultra-fresh fruits and vegetables in your own backyard without synthetic pesticides.

### *Produce for tomorrow*

A virtuous impact on the environment and biodiversity.

### *Transmitting one's convictions*

Reconnect your home to its food-source and reflect the beauty of the living environment.





*Compact, elegant  
and productive*

Smart Greenhouse

# City





The City smart greenhouse has been developed to allow city dwellers to cultivate with ease. On a rooftop, a terrace, a large balcony or a piece of garden, this model brings together the essence of our technology while adapting to urban environments.



Smart Greenhouse

City

Production capacity

Up to 220 pounds of fruit and vegetables annually. Perfect for two people.

Dimensions and weight

37 ft<sup>2</sup> (62 in x 88 in), 882 lbs

Electrical consumption

50W per hour

Installation duration

1 day

Versions

Original, Signature (wood flooring, lacquered greenhouse).

Techniques

Vertical growing (aquaponics or bioponics) and permaculture beds.

6 | 7





Smart Greenhouse

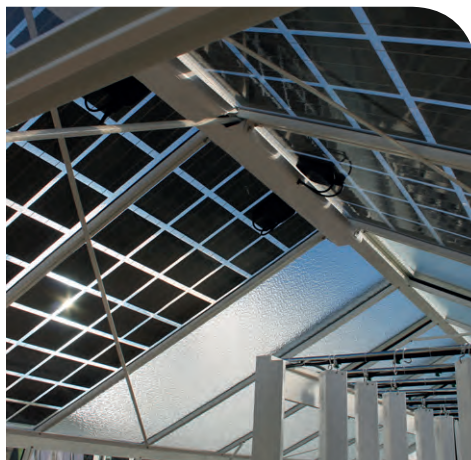
# Family



*A growing space and living space combining  
permaculture and aquaponics*



At the heart of the transformation of a garden or roof, the **Family connected greenhouse** offers a unique experience through its modern and ergonomic production design. A place of meeting and exchange, the time spent in his greenhouse becomes a moment of emotion and contemplation.



Smart Greenhouse

# Family

## *Production capacity*

Up to 882 pounds of fruit and vegetables each year. Perfect for three to four people.

## *Dimensions and weight*

237 ft<sup>2</sup> (150in x 234in), 3307 lbs

## *Electrical consumption*

70W per hour

## *Installation duration*

1 to 3 day (s) (depending on options)

## *Models*

Original, Production (permaculture beds), Winter (integrated pellet stove), Autonomy (solar panels), Signature (wood flooring, lacquered greenhouse).

## *Techniques*

Vertical growing (aquaponics or bioponics) and permaculture beds.





Vertical Garden

# Aero spring

*Grow from your  
balcony in the heart  
of the city*





**For city dwellers**, the supply of fresh produce is directly linked to the daily transporations, the space and the time available in the middle of the days that pass by. Access farming land is not easy to reach for urban citizens. This search can quickly turn into a real obstacle course. **The Aerospring Vertical Garden has been designed to meet the concerns of conscious citizens.**



### **Grow indoors as well**

To allow for all-year-round availability of fresh culinary herbs, leafy greens or small yet important daily vegetables, this vertical garden is available as an indoor version. Equipped with LED lights that support plants in the respect of their natural growth.

The plants grow in small pots that take root inside the Aerospring tower.

Vertical Garden

# Aerospring

## *Production capacity*

Up to 88 pounds of fruit and vegetables annually.  
Perfect for one person.

## *Dimensions and weight*

7 ft<sup>2</sup> (26 in x 26in x H 77in),  
165 lbs with water

## *Electrical consumption*

70W per hour

## *Installation duration*

30 minutes

## *Models*

Original, Indoors (LED ramps, wheelbase).

## *Techniques*

Vertical growing (bioponics).





# *An adventure that is lived & shared*

*in an open and caring spirit ...*



*Many* home cooked meals







*A few* seeds



12 | 13



*Passionately* human...





# Coaching you need in practice to guide you day-by-day



**Community support and agro-economic support is a key feature of the experience.** It allows you to make the right decisions and choose good practices, from start to finish in the use of your smart greenhouse or your vertical garden.

**Simple and effective tools** are at your disposal to **help you grow without any prior knowledge.**



## myfoodhub app

This application allows you to connect to your greenhouse remotely via your smartphone, tablet or desktop computer. You will have access to key information for optimal control (indoor temperature, outside, humidity, acidity water, crop monitoring, recommendations).



## Collaboration platform

This private social network allows you to post achievements, ideas and questions on a dedicated platform. Reactive and focused in order to help your progress, our team of agronomists responds to your questions and provides advice.



## myfood wiki encyclopedia

This accessible and shared knowledge base allows us to consolidate all the know-how and accumulated experience of the community. From land preparation, to assembly, up to using the greenhouse, all of our documentation is centralized in one place.



## YouTube channel

Find testimonials, explanations, tutorials about the use of our solutions on our YouTube channel. Every two months, an online webinar allows a direct and interactive exchange with our team.



# *The Pioneer Community*

## *Each member has a role to play*



Since 2015, a large community of pioneers is organizing throughout the world. Our ambassadors share their experiences with their greenhouse every day. By transmitting what they have learned, they participate every day in evolving food-consumption behaviors. They prove that nothing is predefined and that the future is in our hands.

14 | 15

*“Contribute to a global movement”*

With full transparency, our community share their experience.  
Our Pionners are the real engine of our initiative.

*“You reap what you sow”*

If you are determined to transform the way you eat, your initiative  
will have an impact on your environment and our planet.

*Join the community!*





### *Community spirit is in our DNA*

This initiative was able to emerge thanks to knowledge and know-how freely accessible for the common good. This is called «open source».

### *Provoke innovation*

By listening to the pioneers, we benefit from the richness of their sensitivities. This human experience makes us grow and helps making the ecological transition a reality.



BNP PARIBAS



info@globalesco.com - [www.sustainable-agriculture.gr](http://www.sustainable-agriculture.gr)